

PBIS-Tier 1/Universal-Day 3

Tuesday, October 30, 2012
(registration deadline-October 15, 2012)

Prerequisite:

Have completed

- Universal/Tier 1 Training, Days 1 & 2 **AND**
 - PBIS Kick-Off in your school

Cost: If building team trained before July 1, 2011:

\$695 per building team (up to 8 participants)
\$75 for each additional participant over 8

If building team trained after July 1, 2011:

Day 3 included in packaged price

Cancellation must be made more than 48 hours of the workshop or registrants will be billed.

If special accommodations are required, paid registration must be made three weeks before workshop.

For registration questions, please contact:
Sharon Anderson, sharon.anderson@cesa2.org

All team members must register!

To register, go to <http://www.myquickreg.com>

First time users will be asked to fill out online registration information first so that you may register for this and other CESA #2 workshops.

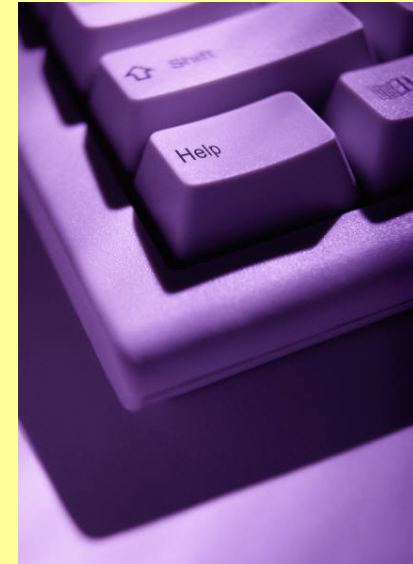
Only registrations made through www.myquickreg.com will be accepted!

You are not registered unless you receive an email confirmation from [myquickreg.com](http://www.myquickreg.com)

The Wisconsin RtI Center/Wisconsin PBIS Network (CFDA #84.027) acknowledges the support of the Wisconsin Department of Public Instruction in the development of this brochure and for the continued support of this federally-funded grant program. There are no copyright restrictions on this document; however, please credit the Wisconsin DPI and support of federal funds when copying all or part of this material.

Tier 1/Universal Level-Day 3

Technical Assistance Day



**October 30, 2012
9:00-3:30 P.M.**

Pre-requisite for Tier 2 Training

**Held at:
CESA #2 Innovation Center
1221 Innovation Drive
Whitewater, WI 53190**

Solving the Puzzle...



Objectives:

Participant will revisit essential school-wide systems (data, teaching, acknowledgement, and interventions) and use the Team Implementation Checklist to self-assess current implementation and action plan around identified needs. In addition, participants will look at the Benchmarks of Quality to begin to understand the use of the tool in self-evaluation.

Understand the essential components of school-wide positive support systems that provide behavior supports to all students. Plan implementation through development of systems, data and practice. Plan for stakeholder buy-in, implementation and sustainability. Receive technical assistance from PBIS Network in developing and planning for implementation of school-wide systems.

This training is a pre-requisite for moving into Tier 2 Training

Register Early!!! Limited to 10 Teams!!!

NOTE: This training is for teams who have completed

- Universal/Tier 1 Training, Days 1 & 2 **AND**
- PBIS Kick-Off in your school

Presenter:

Peg Mazeika,
WI PBIS Network Regional
Technical Assistance Coordinator

Target Audience: Building level Universal team that includes: Building Administrator, external and internal coaches, regular education teachers that represent grade levels, special education teacher, social worker and/or psychologist, specials teacher, paraprofessional and family members.

Participants should bring:

- ♦ School calendar and staff development days
- ♦ All artifacts/products from U100s and U200s such as behavioral matrix, cool/tools/behavior lesson plans, acknowledgement system, T-chart of behavior, “working smarter” grid and any information shared with school community.
- ♦ Big Five data for previous month for problem solving and action planning.
- ♦ Laptop for team work



Don't forget the kids!!!